



BUILDING FOR ALL:

Connecting Inclusive Practices To Improve
the Built Environment and Beyond

EMMA WINISKI City of Oklahoma City

AME SANDERS State of Inclusion



Building a more inclusive world -
one community at a time.

COMMUNITY:

- Geographically Co-located
- Interdependent



Building a more equitable
community is – in every way –
an inside job.

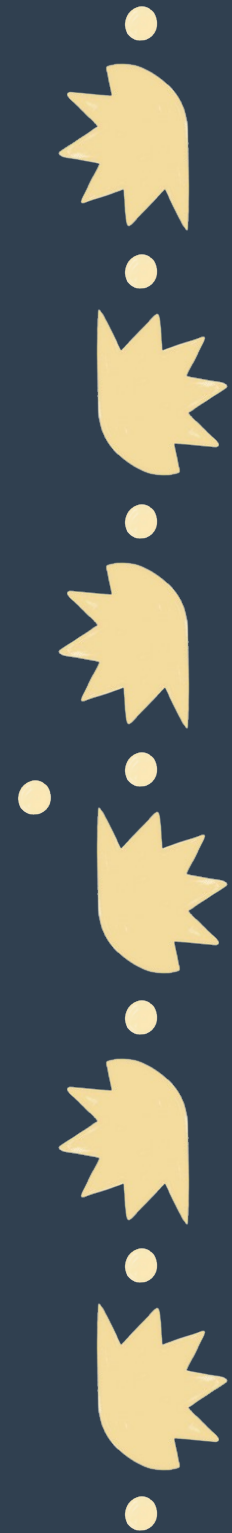
What are communities doing to address these staggering inequities?



Between a process and random
acts of equity and inclusion,



there is something to consider.



SIX PRACTICES FOR BUILDING A MORE INCLUSIVE COMMUNITY

PRACTICES



SELF WORK

Look inward before looking outward.



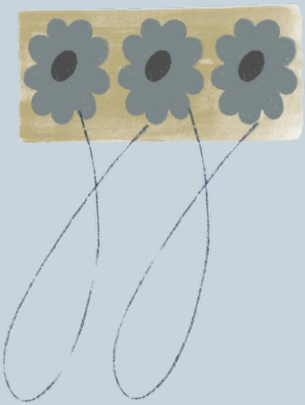
PROGRAM WORK

Catalyze systemic change to advance community progress toward equity and inclusion.



GROUNDWORK

Prepare the community soil for the work of equity and inclusion to take root.



SYSTEMS WORK

Create lasting change from the inside out.



COALITION WORK

Weave institutions and initiatives together to strengthen equity outcomes across the community.



ECOSYSTEM WORK

Build equity fascia for the community.

Oklahoma City Government

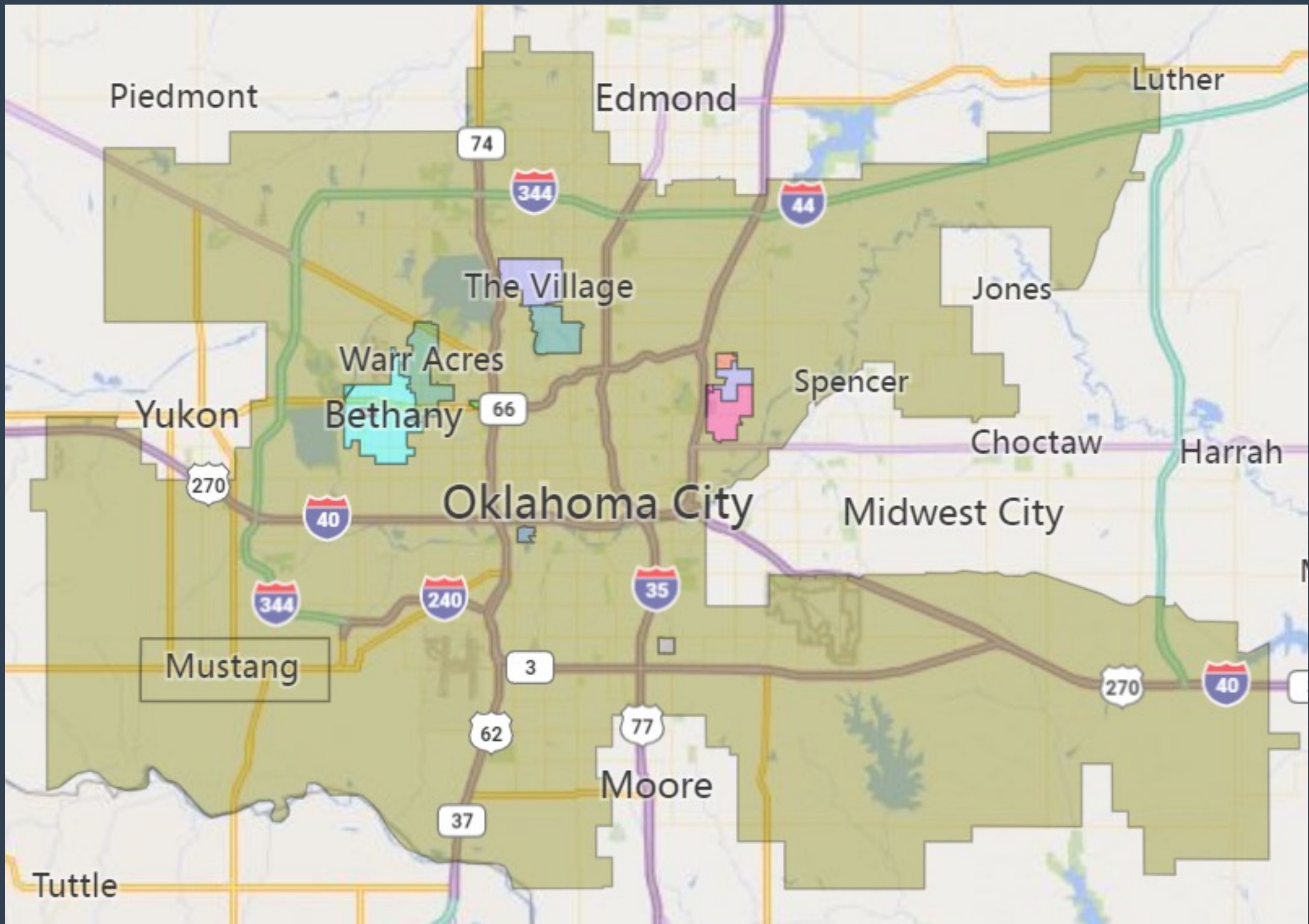


The City of
OKLAHOMA CITY

Equity Practices at Work

GENERAL OBLIGATION (GO) BOND

- Funded by property taxes
- Wide range of capital improvement projects
- Every ~10 years



TIMELINE:



Planning

**Public
Engagement**

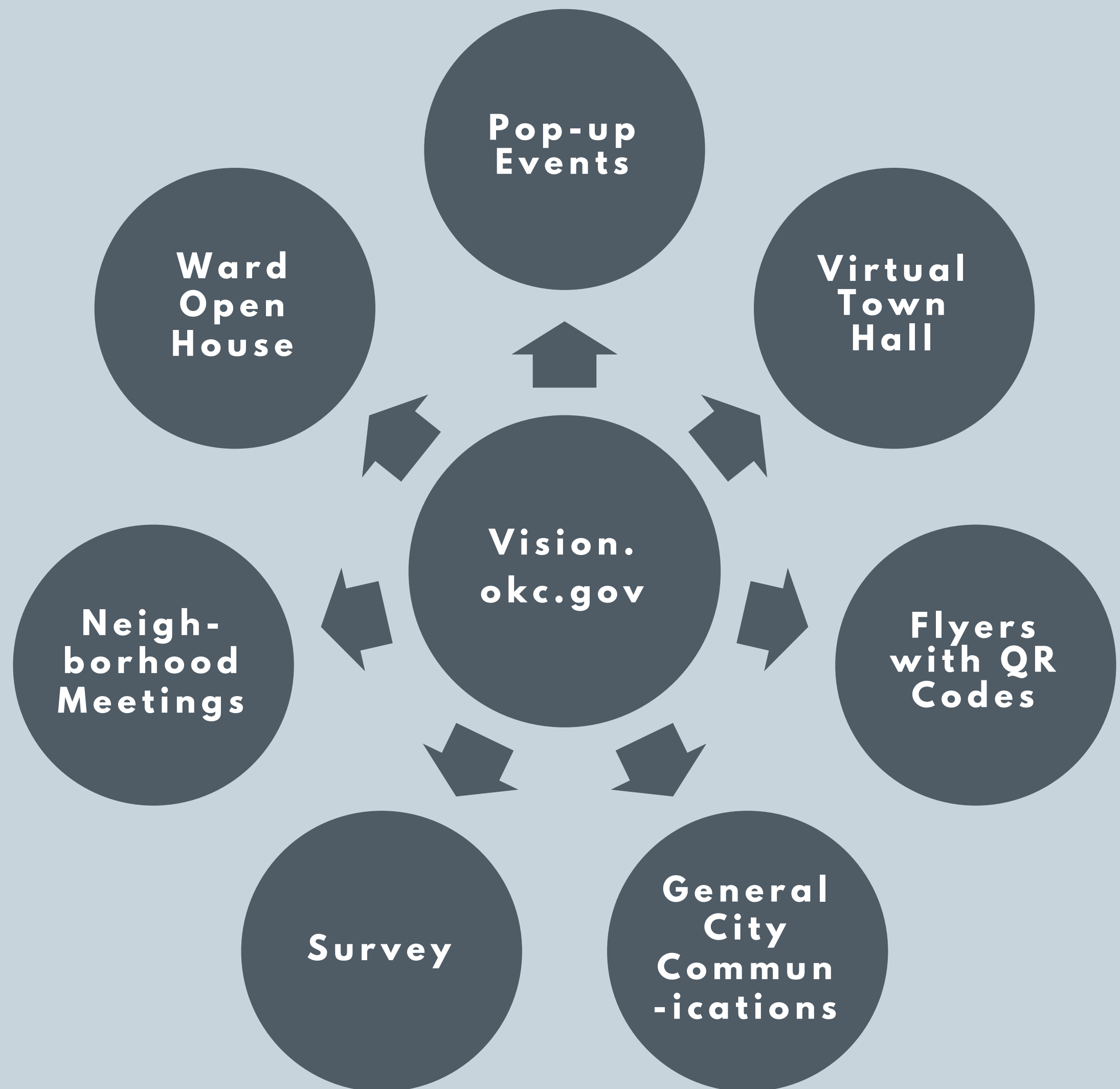
**Preparing
for the Vote**

Months: 0-9

10-18

18-24

ACTIVITIES:



Help shape the 2025 GO Bond program

The bond package is for basic needs and critical infrastructure every community needs for stability, growth and safety.

GO bonds are the City's most important tool to fund major infrastructure projects like building or rebuilding streets, bridges, parks, police and fire facilities, sidewalks and more. They're funded by property taxes. Bond projects are determined based on resident survey results, street and bridge ratings, planning studies, the City Council's strategic priorities and operating impact. We can't meet every need across OKC's 621 miles with a single GO bond election, but the tools on this page will help City Council identify priorities.

In 2017, Oklahoma City voters approved 13 bond propositions and two sales tax initiatives known as the **Better Streets, Safer City projects**. Residents will have the chance to approve specific capital improvement projects that will be part of the GO bond package in 2025.

Open

Help us prioritize needs

Drop a pin on the map below and help us understand and prioritize community and neighborhoods needs across Oklahoma City.

685 contributions so far

Calendar of events

The project team will be out in the community collecting input and hosting workshops throughout the eight City Council wards. Check this page for frequent updates.

Ward 1 Open House

🕒 Oct 17, 2024 5:30 PM - Oct 17, 2024 7:30 PM

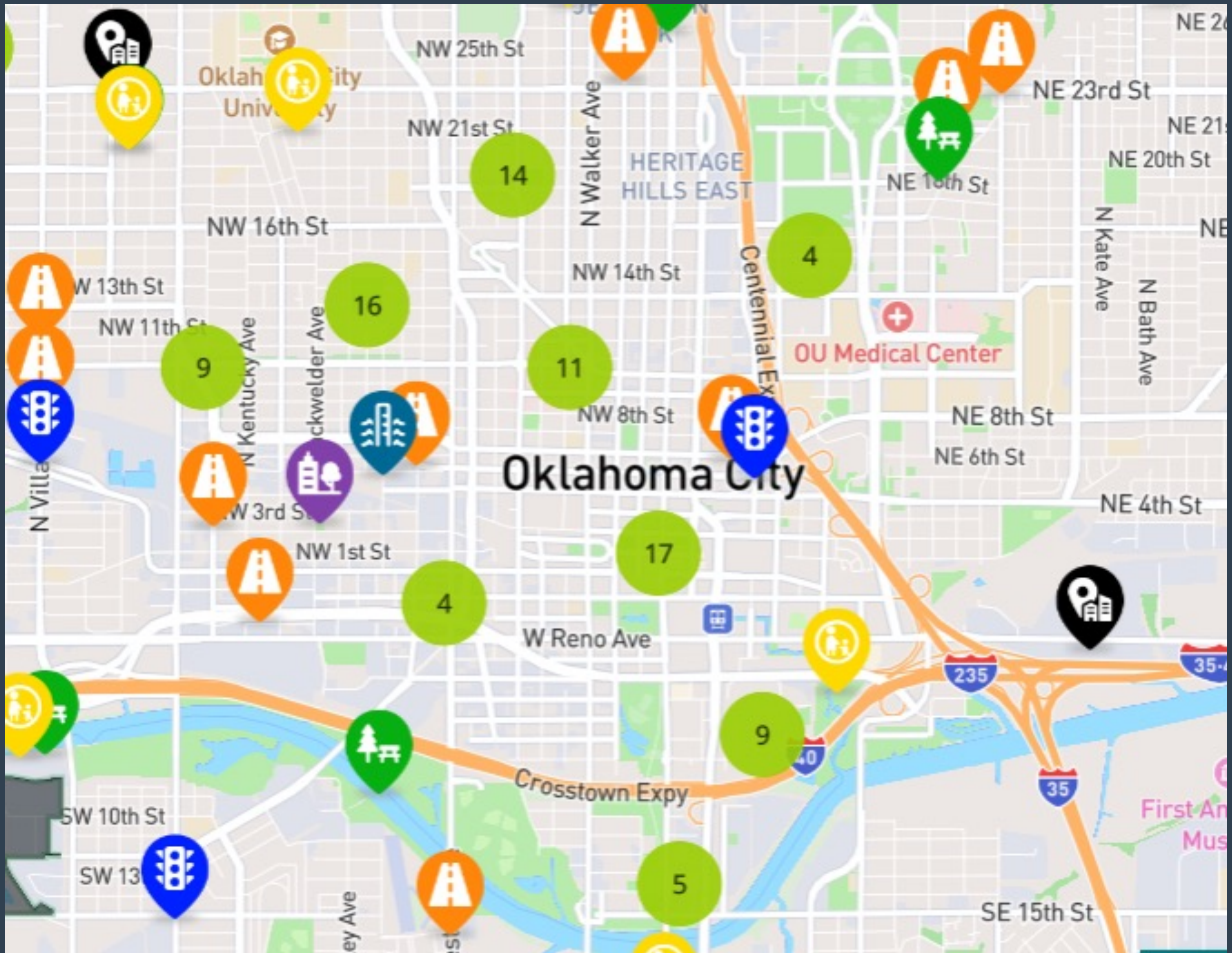
📍 Healthy Living OKC, 11501 North Rockwell Avenue, Oklahoma City, OK, USA

The City of Oklahoma City is hosting an open house as we plan for the OKC GO Bond in 2025. Attendees will have an opportunity to talk to City staff, d...

Ward 7 Open House

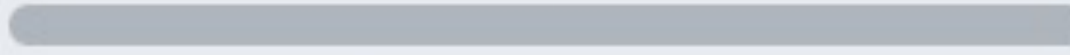
🕒 Oct 21, 2024 5:30 PM - Oct 21, 2024 7:30 PM

📍 Willa D. Johnson Recreation Center, 909 Frederick Douglass Ave, Oklahoma City, OK, USA



Your remaining points:

100 pts



MINIMUM SPEND
1 PTS

Sort by ▾



Economic development

0 pts ▴ ▾



1 pts

100 pts



Libraries

0 pts ▴ ▾



1 pts

100 pts

IMPROVEMENT AREAS:

**Streets and
Sidewalks**

**Traffic
Control**

Drainage

Bridges

**Parks and
Recreation**

**Fire and
Police**

Libraries

Transit

**Economic
Development**

PRIOTIZATION METHOD (example):

Fire Department:

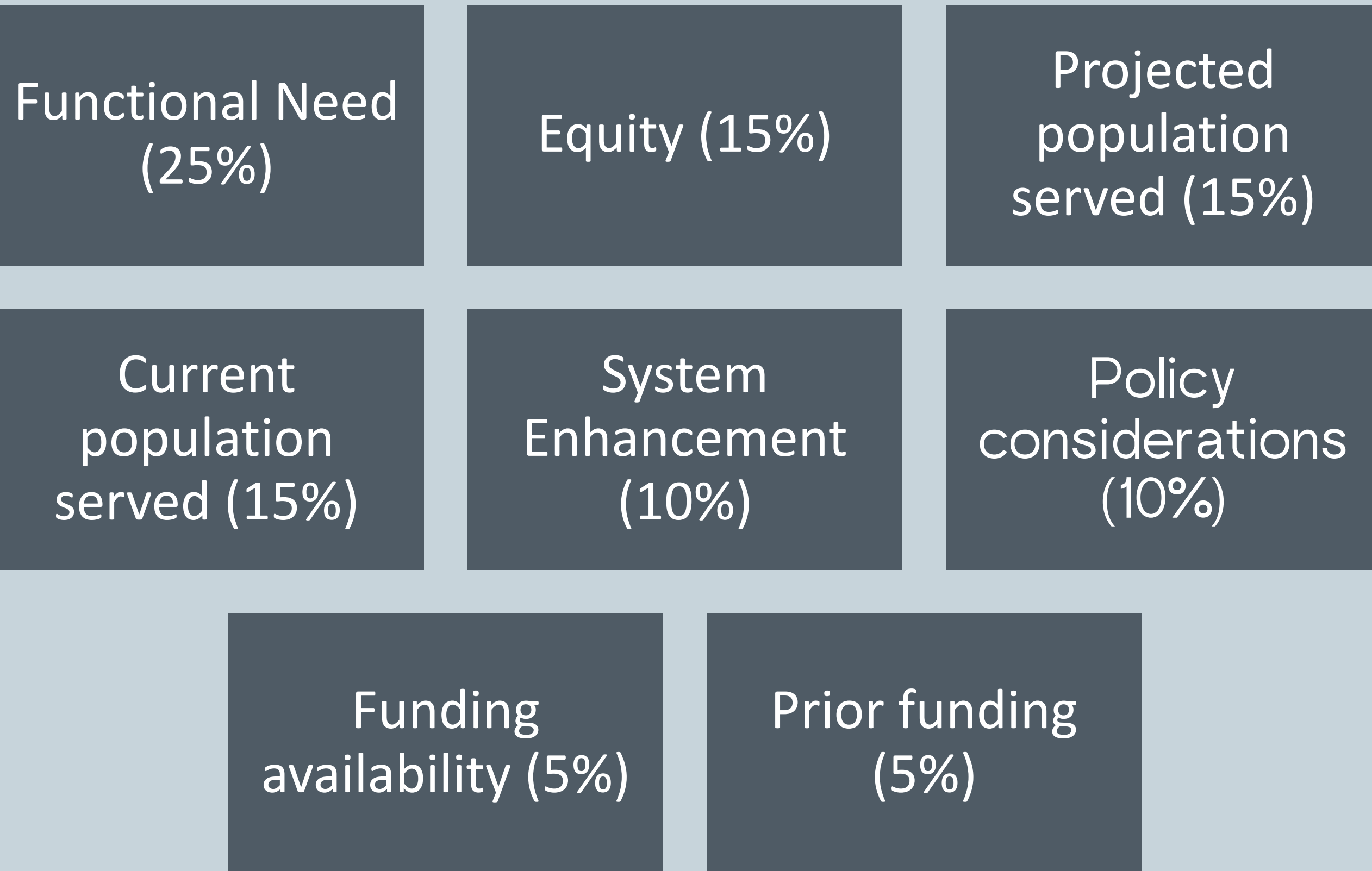
1. Determine Needs and Projects

- Provides List of Projects to Go Bond Program

2. Prioritize Projects

- Director (Chief) Prioritizes Projects
- Sends to Public Works

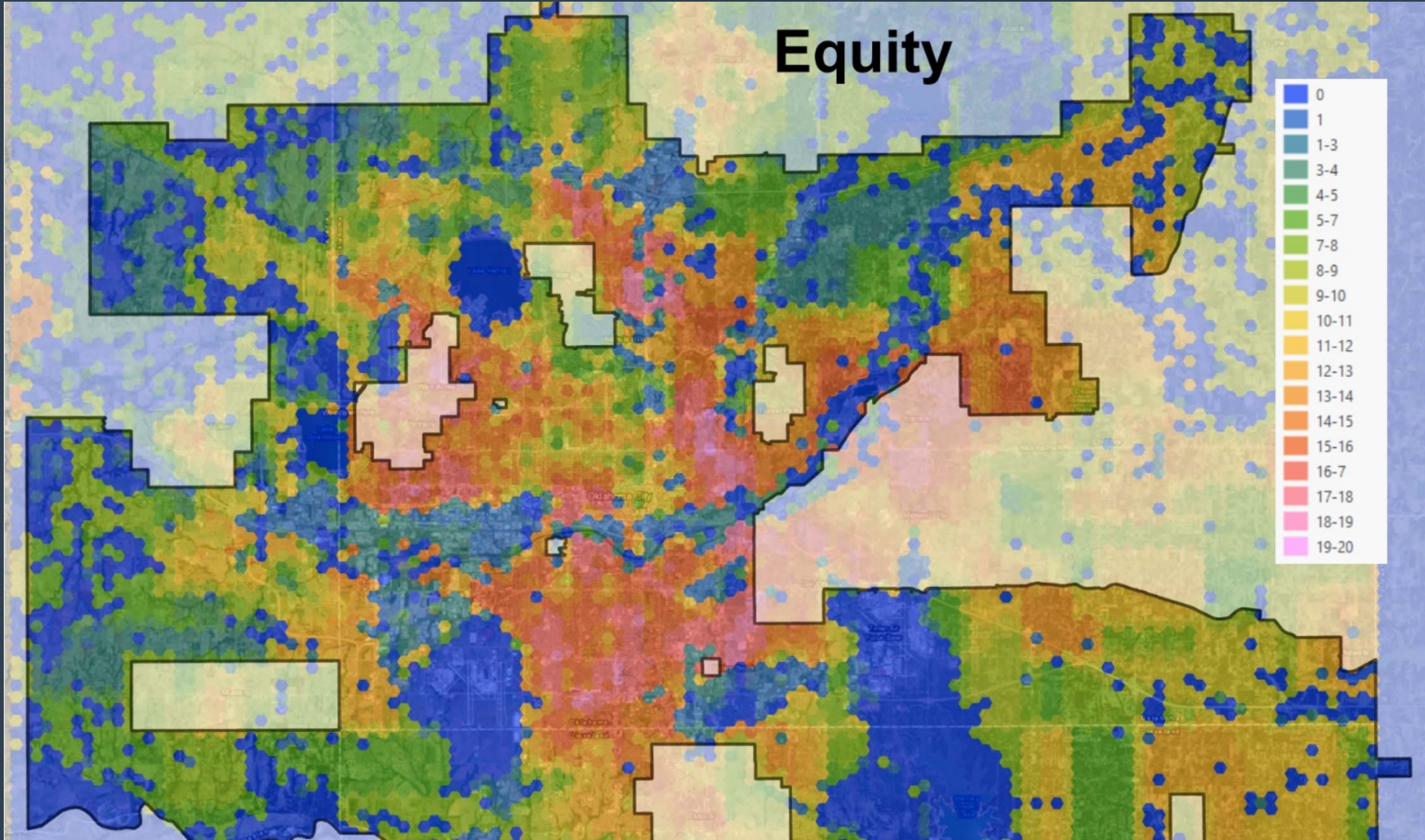
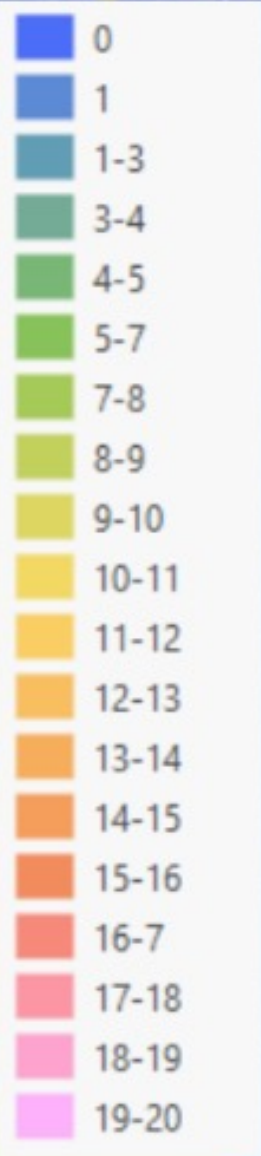
PRIORITIZATION CRITERIA:



OVERALL GOALS:

- Broaden view of capital projects to include context of communities around projects' physical locations

Equity



SCORING (EXAMPLE):

FIRE DEPARTMENT & LOGISTICS FACILITY – REBUILD/EXPANSION				
Consideration	Score Range	Score	Weight Factor	Total Points
Responsive Populations and Equity: Project Serves Disadvantaged				
High Equity Score: Greater than 10	5	5	2	10
Medium Equity Score: 5-10	5			
Low Equity Score: Less than 5	1			

SPECTRUM OF PUBLIC PARTICIPATION

(IAP2)

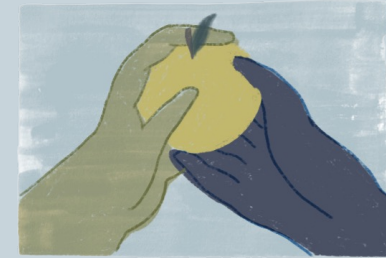


PRACTICES



SELF WORK

Look inward before looking outward.



PROGRAM WORK

Catalyze systemic change to advance community progress toward equity and inclusion.



GROUNDWORK

Prepare the community soil for the work of equity and inclusion to take root.



SYSTEMS WORK

Create lasting change from the inside out.



COALITION WORK

Weave institutions and initiatives together to strengthen equity outcomes across the community.



ECOSYSTEM WORK

Build equity fascia for the community.

Breakout (15 min)

Topic 1: Are you using an equity lens in your community to prioritize and direct funding for the built environment? In other types of community planning? How so?

Topic 2: Which of the six practice areas do you feel are most relevant to your work? How can you better integrate across practices areas to strengthen your work?

DEBRIEF

Q&A

CONCLUSIONS

- X
- X
- X

THANK YOU!!